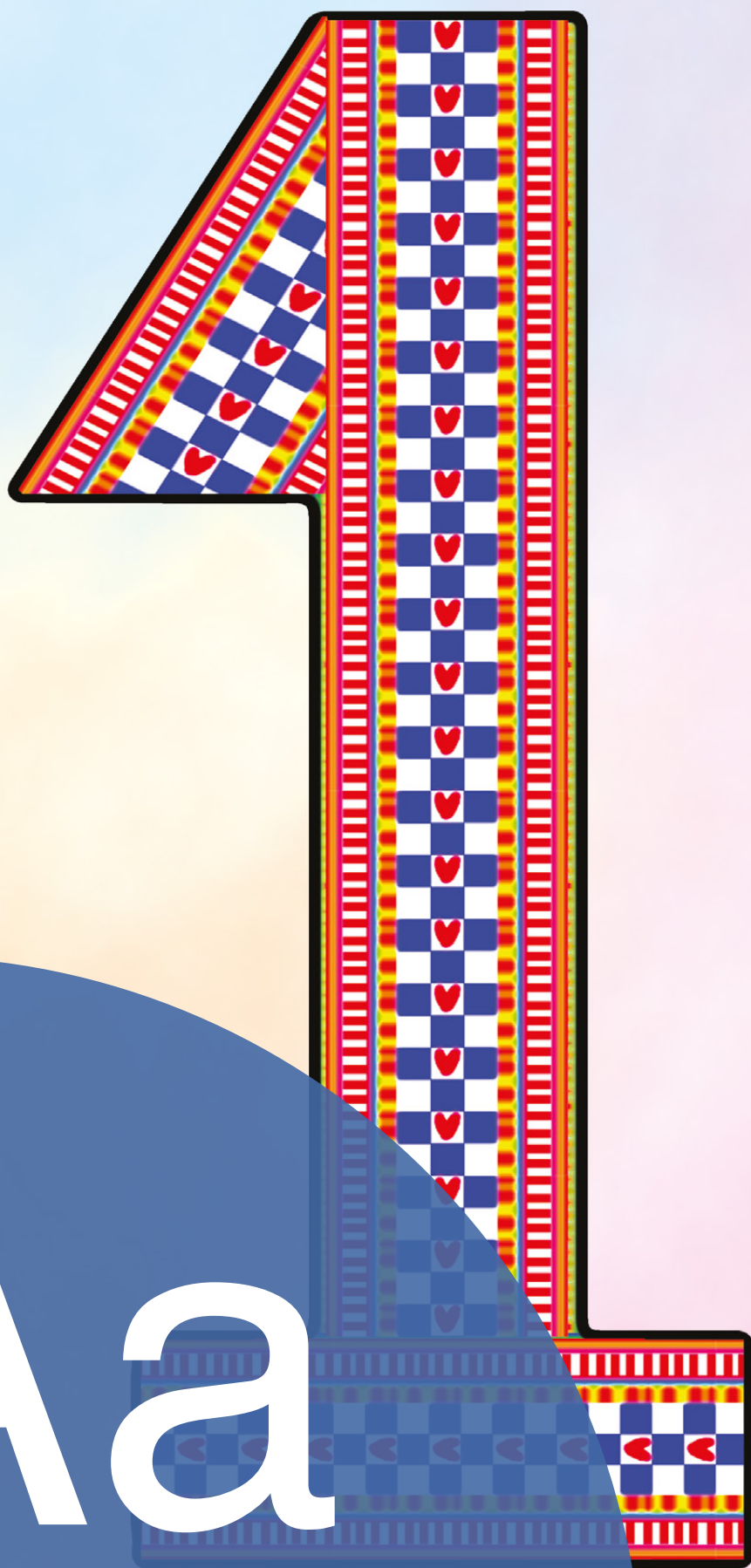




Áá

átjájuakksa



Aa

akkta



Bb

bátsoj

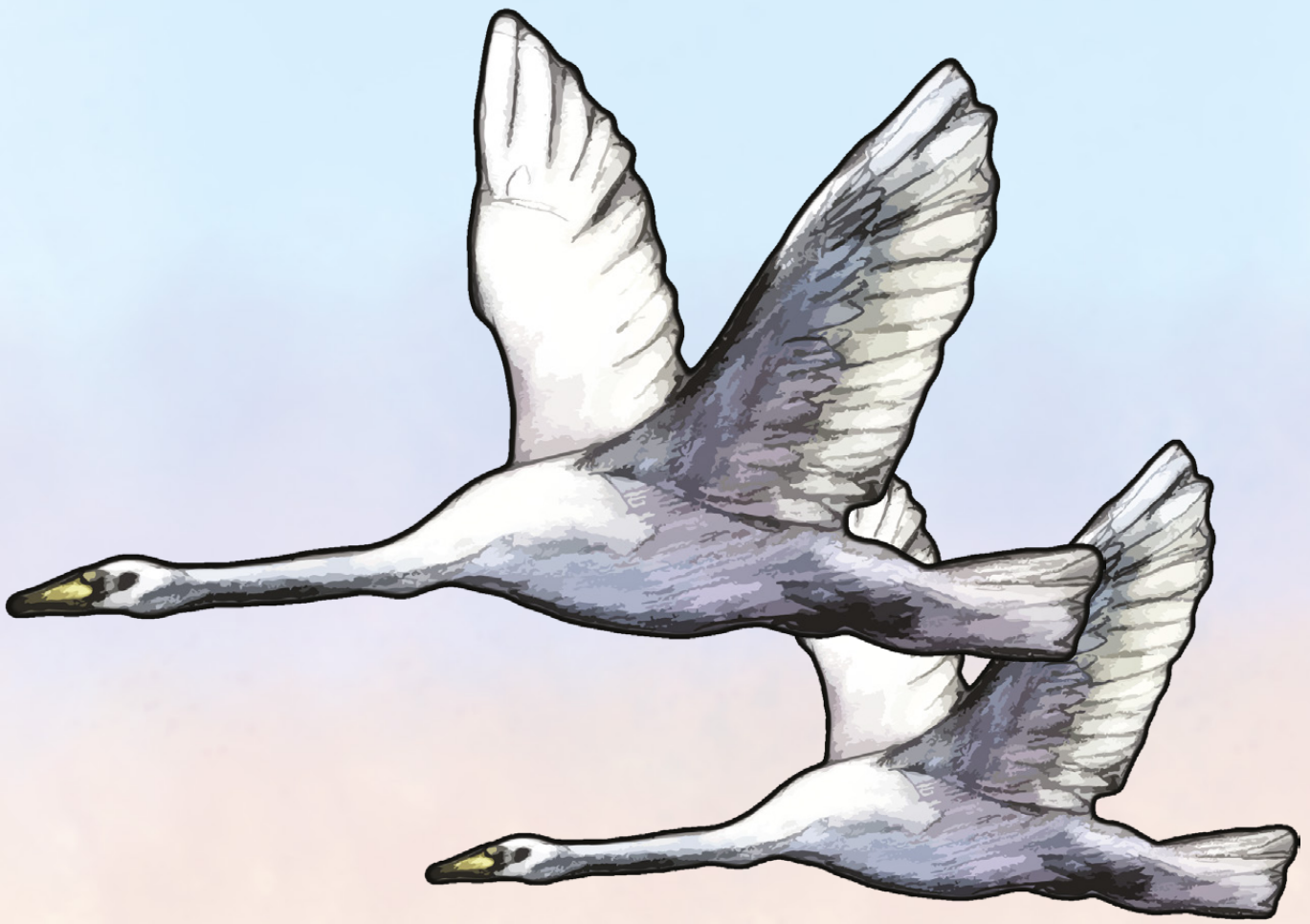




Dd

dadne





Ð ð

gidða



Ee

elefánnta



Ff

fábmo





Gg

gåjkebärrgo



Hh

hávvga



ii

irрге





Jj

jävvlääjjá



KK

krokodijla





L

lijdne





Mm

muaddá



Nn

njálbme





Nn

jågnå





Pp

pänna



Rr

rávvdo



Ss

simmká





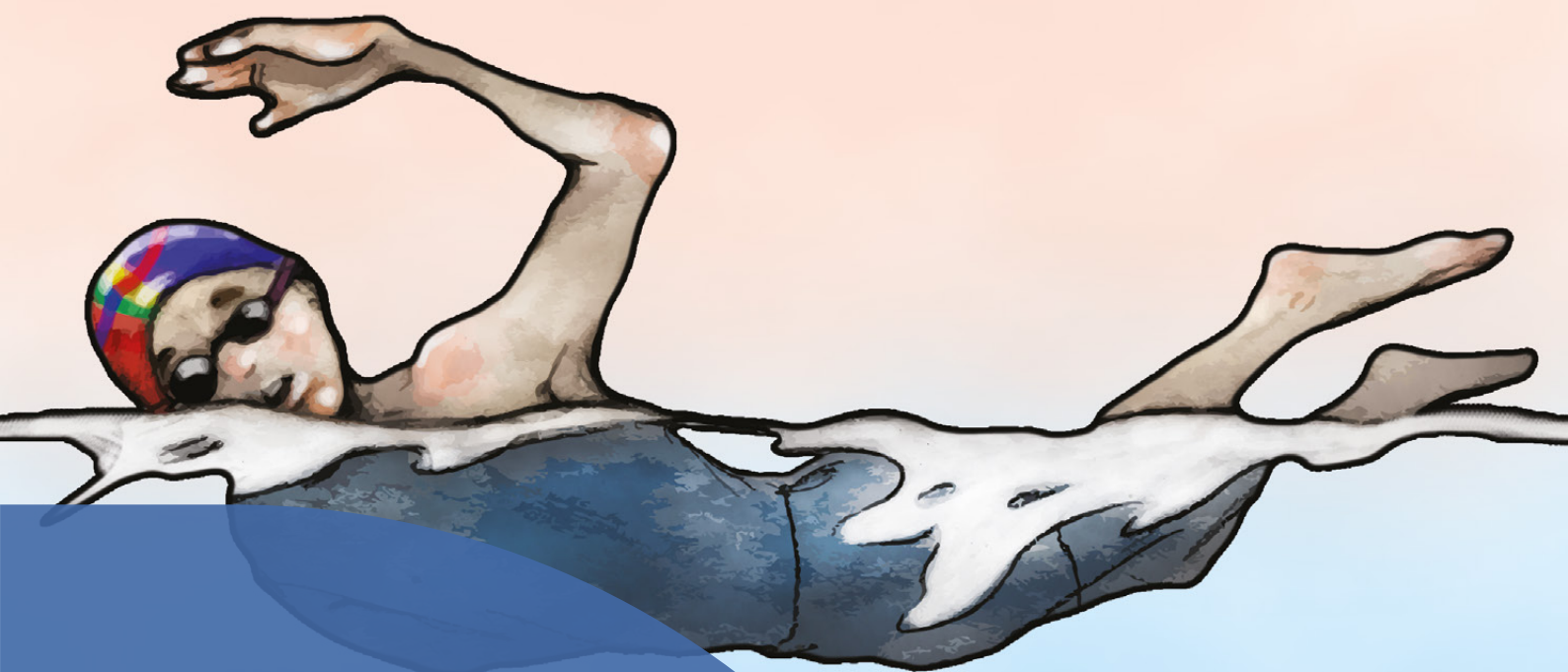
Tt

traktuvvra



Uu

uksáhkká



Vv

vuojjat





Åå

årre



Ää

äddne





ie  
siehka





ua

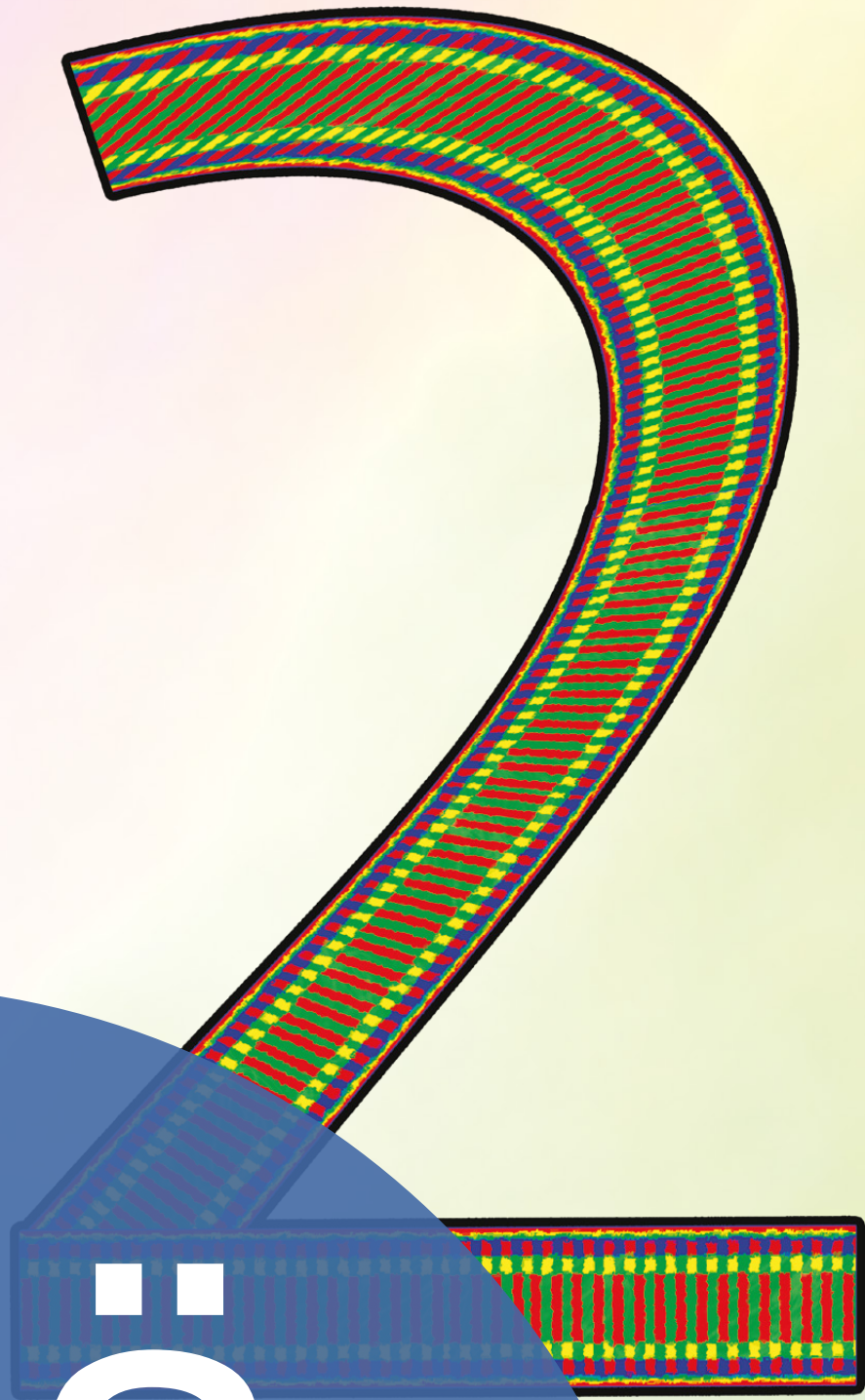
muaddá



uo

guolle





uä

guäkkte